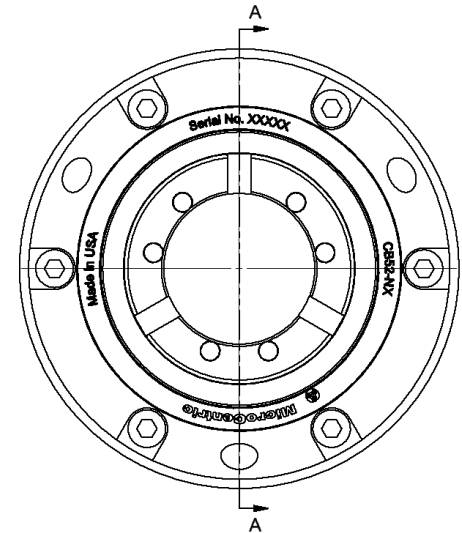
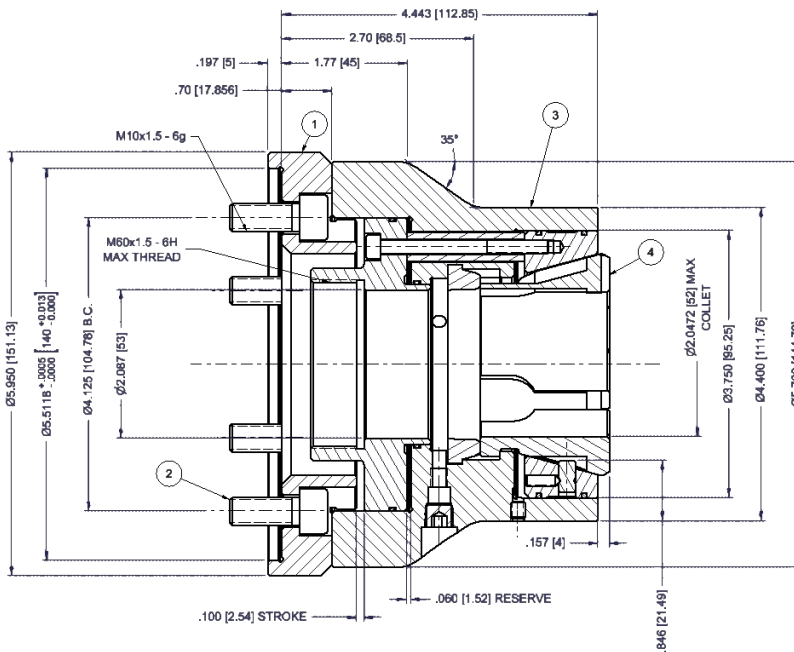


Specifications

Chuck Model	Spindle Nose	Collet Model	Accuracy Max Radial Runout	Collet Capacity	Collet Clamp Range	Chuck Stroke Linear	Max Draw Tube Force	Max Clamping Force	Max Speed	Chuck Weight
CB52-NX/140	140mm	52BZI	.0004"	1.625"	+/- .020"	0.160	8,992	21,132	7,000 rpm	20.3 lbs
			0.010mm	42mm	0.5mm	4mm	40 kN	95 kN		9.2 kg

Dimensions



ITEM	QTY	PART NUMBER	DESCRIPTION
1	1	16 042 306	ADAPTER
2	6	83 193 M025	M10 x 25SHCS
3	1	16 052 200	FITTED BODY & SLEEVE
4	1	20 752 M5200	COLLET DIA 52MM
5	1	SEE NOTE 2	DRAW TUBE CONNECTOR

NOTES

1. THE CHUCK IS SHOWN IN THE NOMINAL CLAMPED POSITION.
2. DRAW TUBE CONNECTOR AND THREAD PER CUSTOMER REQUIREMENTS.
3. THE CHUCK IS SHOWN WITH THE MAX COLLET BORE.